



A joint venture with **K LINE**

SAL
Schiffahrtskontor Altes Land GmbH & Co. KG
Bürgerei 29
21720 Steinkirchen
Germany

Phone +49 4142 81810
Fax +49 4142 810281/82
www.sal-heavylift.com



- VESSELS ISM CERTIFIED
- ISO 9001 CERTIFIED
- ISO 14001 CERTIFIED
- OHSAS 18001 CERTIFIED



- ENVIRONMENTAL PASSPORT



January 2011

• TWO NEW BUILDINGS OF TYPE 183 •



A joint venture with **K LINE**

SAL | FULL-SERVICE HEAVY LIFT SHIPPING

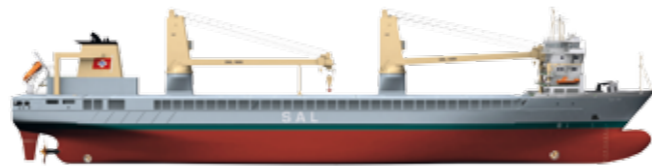


Equipped with Dynamic Positioning System

Delivery	December 2010, March 2011
Speed	20 knots
Cranes	2 x 1,000 mtons SWL combinable up to 2,000 mtons
Hold	107.10 x 17.00 x 13.70 m
Deck	128.50 x 27.50 m

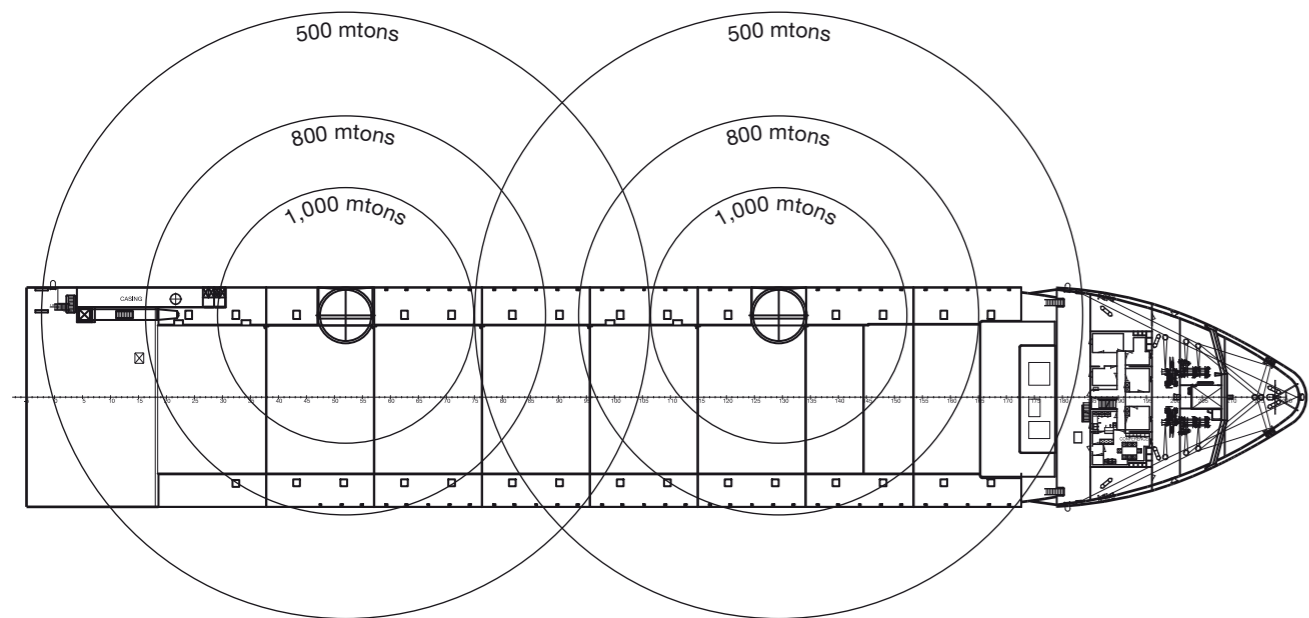
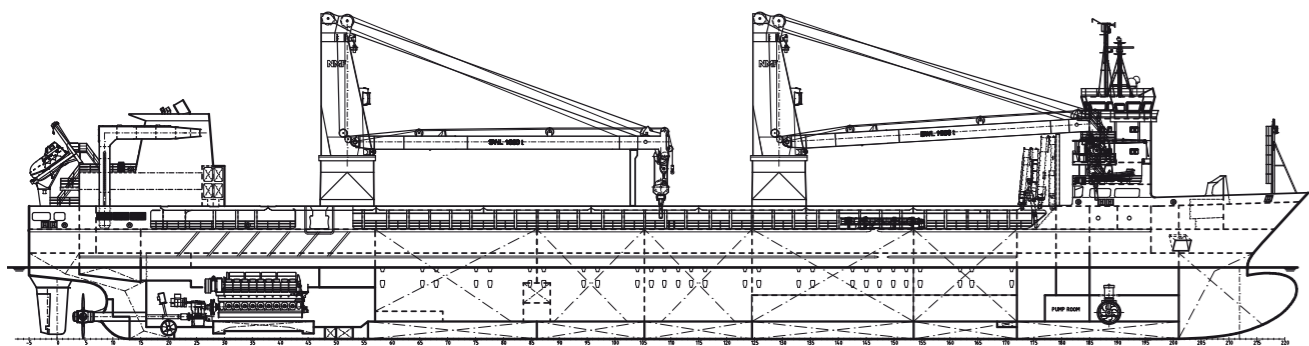


• TECHNICAL DATA TYPE 183 •



• EQUIPPED WITH DP •

• TYPE 183 – A NEW GENERATION •



Crane outreach

TYPE 183

Equipped with Dynamic Positioning System

Deadweight	12,500 mtons
Tonnage	15,200 GT/4,600 NT
Class	GL + 100 A5, G General Cargo Ship Strengthened for Heavy Cargo, BWM-S, EP, SOLAS II-2, Reg. 19, MC AUT
Length over all	160.50 m
Beam	27.50 m
Deck	128.50 x 27.50 m
Hold	107.10 x 17.00 x 13.70 m Adjustable tweendeck Capable of trading with open hatch
Cranes	2 electrical-hydraulic turning cranes with a lifting capacity of 1,000 mtons SWL each, both mounted on portside, combinable up to 2,000 mtons SWL
Crane outreach	16 m – 1,000 mtons 25 m – 800 mtons 38 m – 500 mtons
Engine	MAN 58/64 Diesel Engine of 17,136 HP Fitted with one bowthruster of 1,632 HP and one stern thruster of 1,088 HP
Service speed	20 knots
Shipyard	J. J. Sietas KG Schiffswerft GmbH u. Co., Hamburg/Germany
Delivery	December 2010, March 2011

The final details may differ from the details given above.

In 2010/2011, SAL's fleet will experience another significant growth with the delivery of two new heavy lift vessels. Type 183 represents a new generation of heavy lift ships. In collaboration with the German Sietas shipyard, SAL has developed a vessel type that corresponds to market demands and features the most advanced technology. Both heavy lift vessels will be equipped with two 1,000 mtons SWL portside cranes with a combined lifting capacity of up to 2,000 mtons SWL. Similar to the current fleet, the new buildings will have a high speed of 20 knots.

Another innovation of the type 183 is the capability to trade with an open hatch to accommodate oversized cargoes. In addition, the vessels will be equipped with a Kongsberg Dynamic Positioning System. The DP system will allow for better positioning in offshore projects including the windmill sector.

The combination of speed, crane capacity and offshore positioning tools makes these highly capable vessels unique in the heavy lift sector.

The new buildings will continue SAL's dedication to a safe and environmentally friendly setting on board. The vessels will be awarded the "environmental passport", which certifies that they comply with the highest environmental protection specifications. In addition, the ships will receive ISO 14001 and OHSAS 18001 certification.

These technical and ecological preconditions ensure that the ships will be ready for employment in future markets.

