

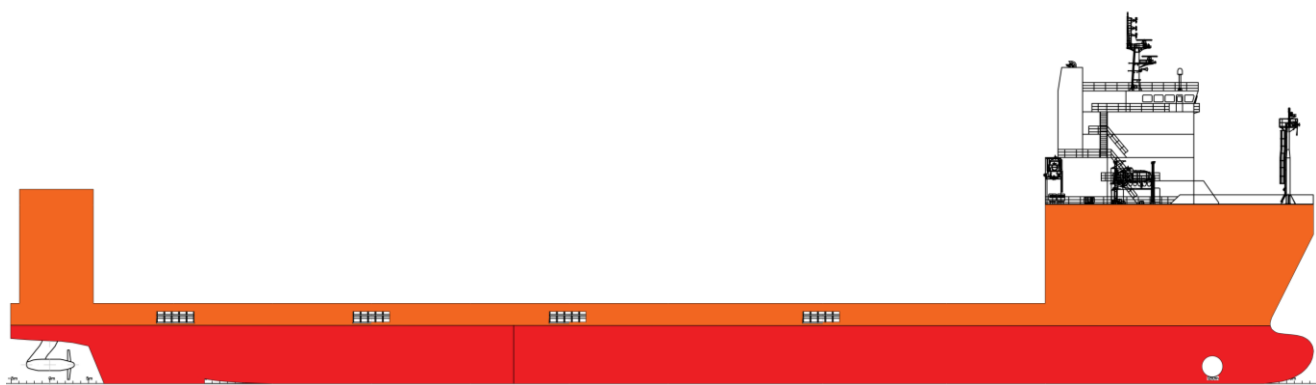
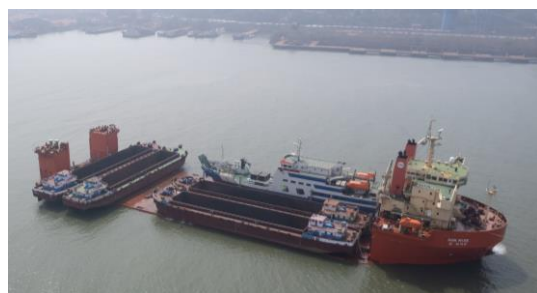
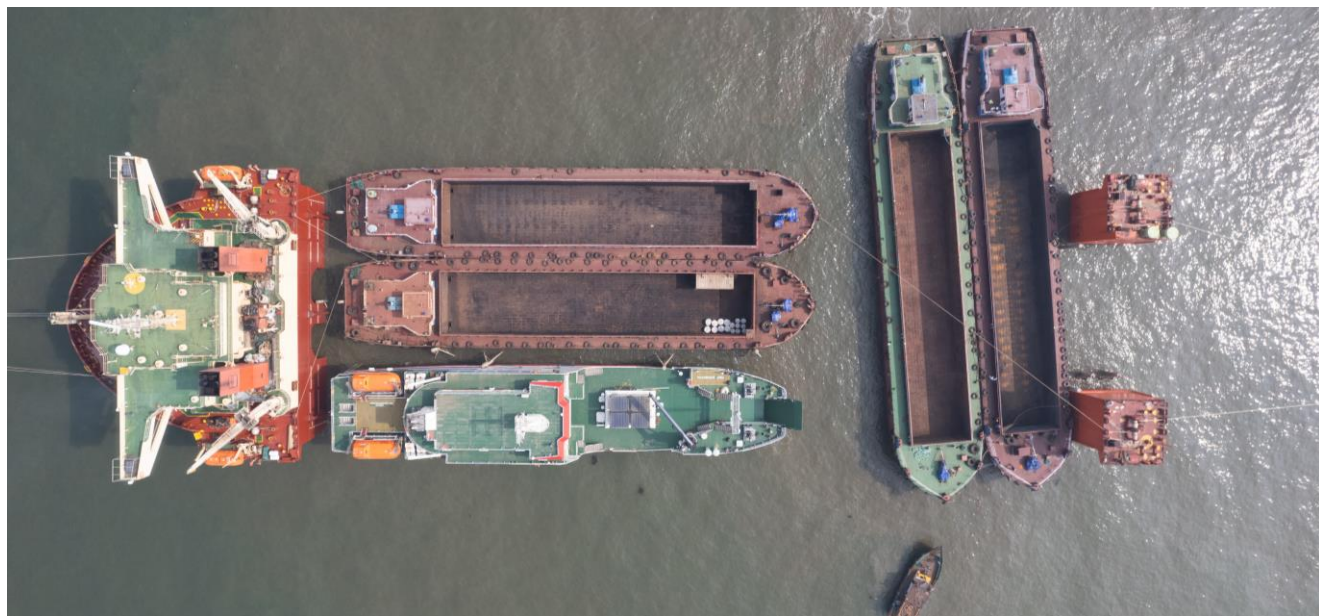


MV Alma



A versatile submersible vessel for the offshore energy and logistics infrastructure industry.

Illustrations - MV Alma



Particulars - MV Alma

Management, Flag & Classification

Operator	SAL Heavy Lift GmbH & Co. KG
IMO No.	9623219
Flag of Registry	Antigua & Barbuda
Classification	KR, +KRS1 – CARGO SHIP, Deck Cargo Ship, Semi-submersible at sinking condition CLEAN1, IWS, IHM, PSPC, LG, LI, UMA, PMS, BWE, DPS(1) + KRM1
Year Built	2012

Principal Dimensions

Length Over All	168.50m
Breadth (Moulded)	40.00m (Breadth with Sponson: 44m)
Deck Space	134.00m x 44.00m
Depth to Main Deck	10.30m
Draft Submerged	17.80m
Air Draft	54,27m

Tonnage

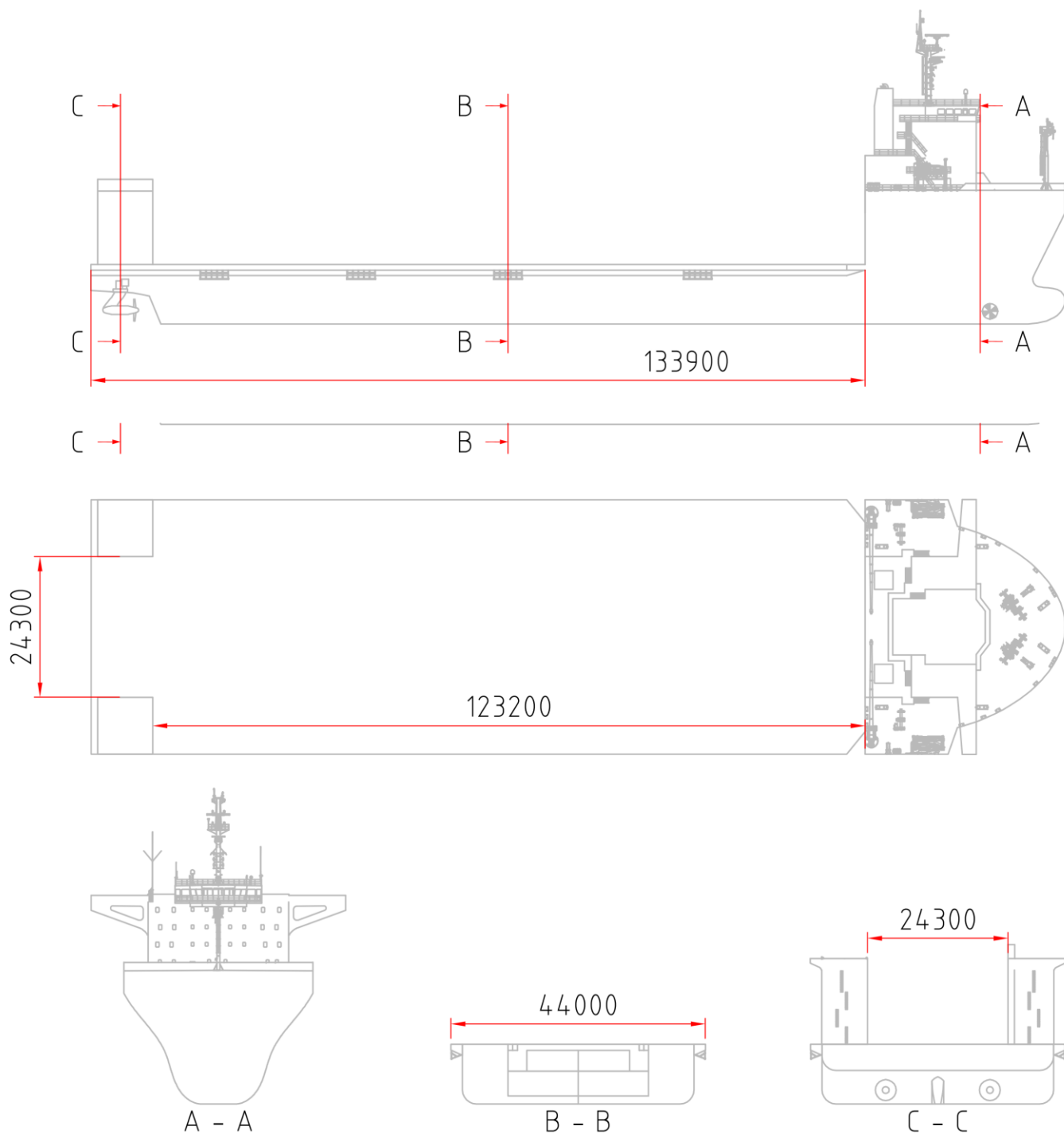
Deadweight (SSW)	24,629t
International (GRT / NRT)	22,499t / 6,749t
Suez (GRT / NRT)	24,377.24t / 20,955.46t
Draft (SSW)	7.08m

Machinery / Service Speed

Main Propulsion Engine (Type, Power, Maker)	Three (3) sets for electric propulsion 8L32/40, 4000kw, STX MAN B&W
Propelling Power (Type, Power, Maker)	Two (2) sets of Azipod Thruster, 4500kw, ABB
Service Speed	9.5 knots
Ballast System (Main Ballast Pump)	2 x 3.500 m³/h

*Vessel's consumption are given in good faith with no guarantee, in still water, ideal draft, no cargo, weather and sea-state permitting, force majeure excluded, all going well.

General Arrangement - MV Alma





MV Alma

foto: Piotr Lewandowski © TOSEM.pl // MarineMedia.eu



SAL Heavy Lift GmbH & Co. KG

Brooktorkai 20
20457 Hamburg, Germany
Phone: +49 40 380380-0

www.sal-heavylift.com

A  **HARREN GROUP** Company