

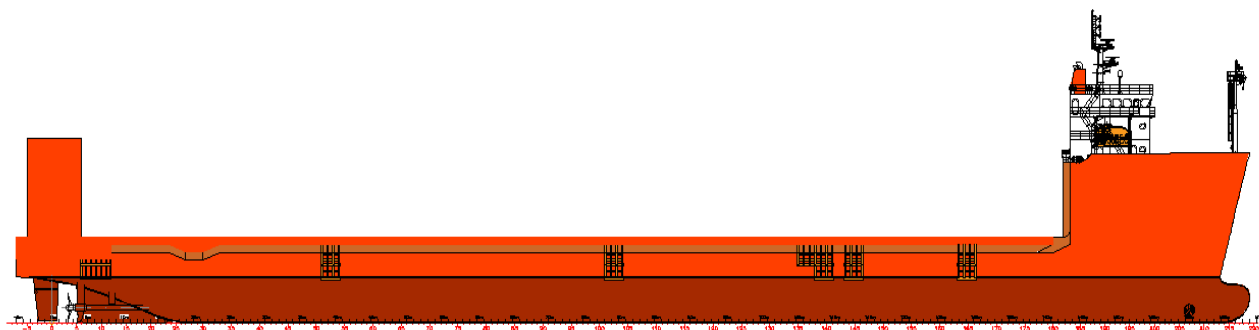
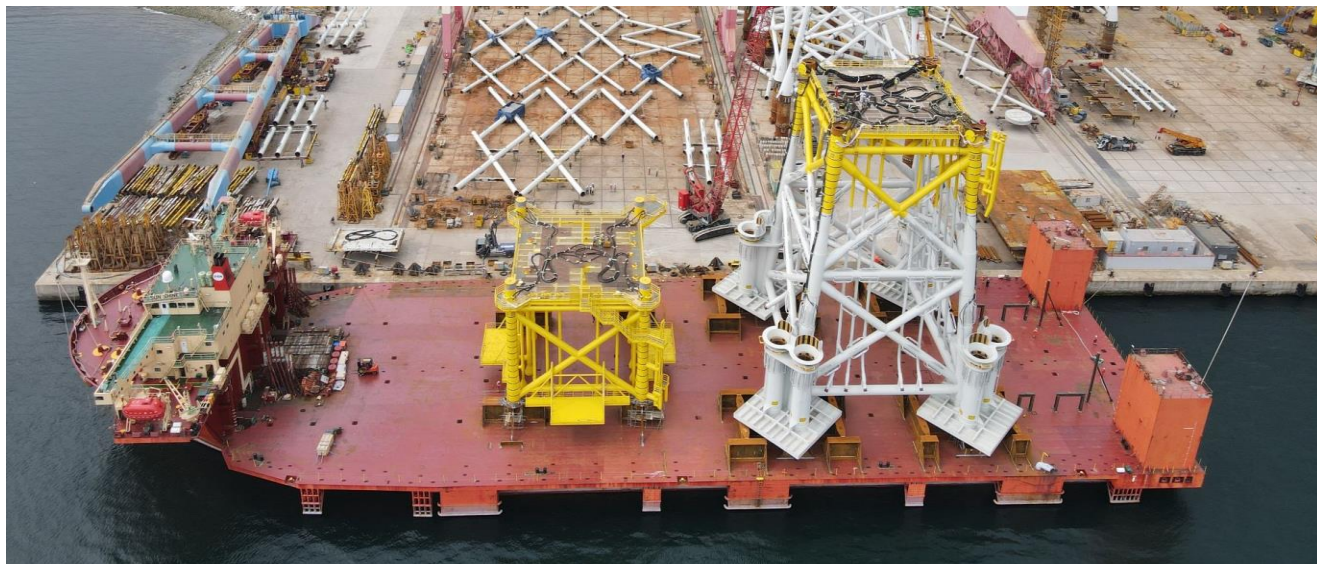


MV Luisa



A versatile submersible vessel for the offshore energy and logistics infrastructure industry.

Illustrations - MV Luisa



Particulars - MV Luisa

Management, Flag & Classification

Operator	SAL Heavy Lift GmbH & Co. KG
IMO No.	9471616
Flag of Registry	Antigua & Barbuda
Classification	KR, +KRS1 – CARGO SHIP, Deck Cargo Ship, CLEAN1, LG, LI, PMS, BWE + KRM1
Year Built	2008

Principal Dimensions

Length Over All	174.00m
Breadth (Moulded)	40.00m (Breadth with Sponson: 48m)
Deck Space	148.00m x 48.00m
Depth to Main Deck	10.25m
Draft Submerged	17.30m
Air Draft	39,25m

Tonnage

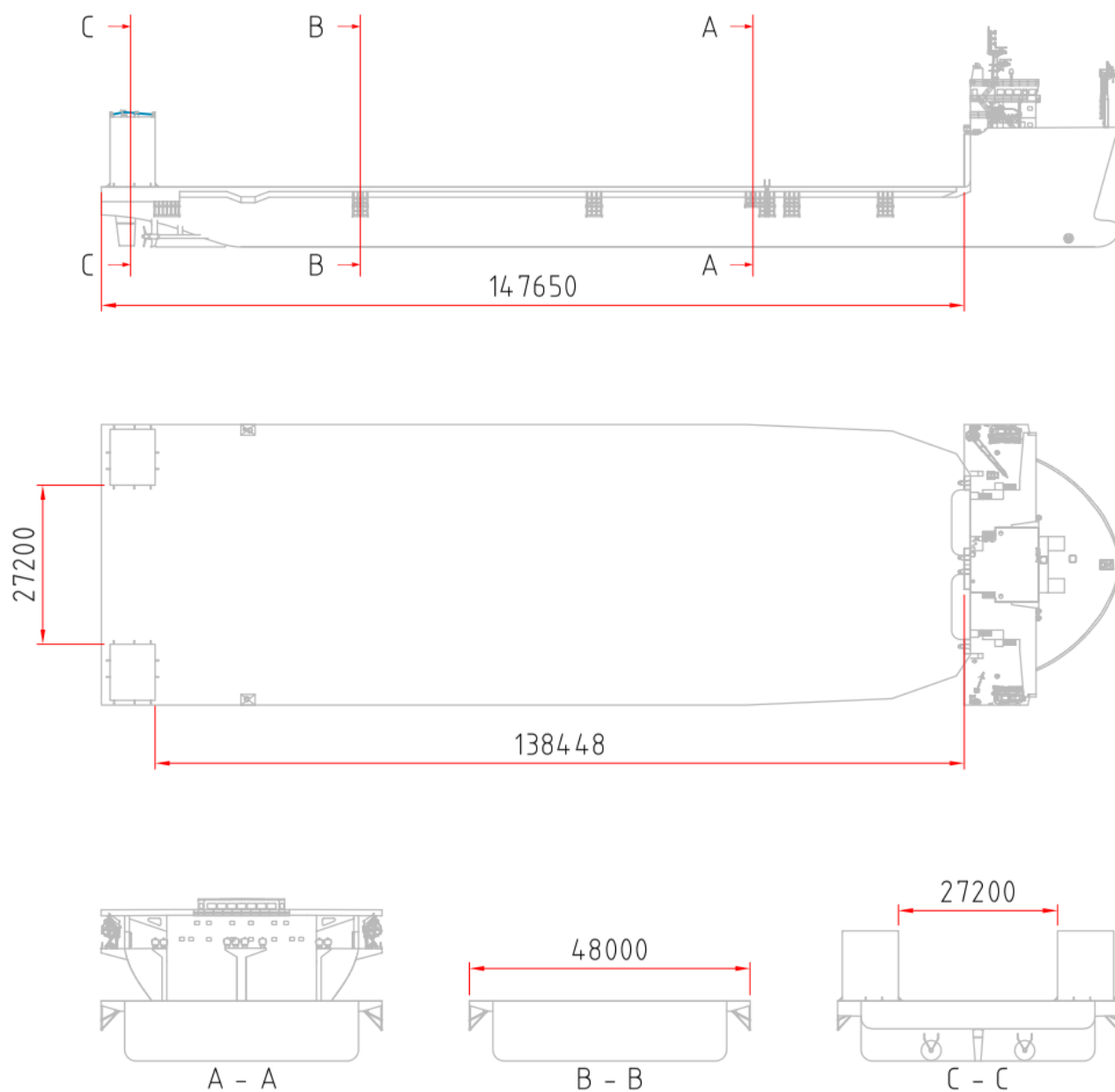
Deadweight (SSW)	17,113t
International (GRT/NRT)	17,824t / 5,348t
Suez GRT	19,896.9t
Draft (SSW)	5.00m

Machinery / Service Speed

Main Propulsion Engine (Type, Power, Maker)	STX 8L32/40 – 3,600kw x 750 rpm x 2 sets
Propelling Power (Type, Power, Maker)	Two (2) sets of 4 baldes, 4,900 ps x 750 rpm, STX MAN B&W
Service Speed	9.0 knots
Ballast System (Main Ballast Pump)	4 x 2.500 m³/h

*Vessel's consumption are given in good faith with no guarantee, in still water, ideal draft, no cargo, weather and sea-state permitting, force majeure excluded, all going well.

General Arrangement - MV Luisa





MV Luisa

SHIP'S PARTICULARS



SAL Heavy Lift GmbH & Co. KG

Brooktorkai 20
20457 Hamburg, Germany
Phone: +49 40 380380-0

www.sal-heavylift.com

A  **HARREN GROUP** Company