

# MV. Sun Shine

## Vessel Particulars



### General Information

Built	2008 / STX Offshore & Shipbuilding Co., Ltd.
Type	Self-Propelled Semi-Submersible
Class	KR & ABS
Flag	Panama

### Principal Dimensions

Length O. A.	174.00 M
Breadth (Moulded)	40.00 M (Breadth with Sponson : 48 M)
Deck Space	148.00 x 48.00 (M)
Depth to Main Deck	10.25 M
Draft Submerged	17.30 M

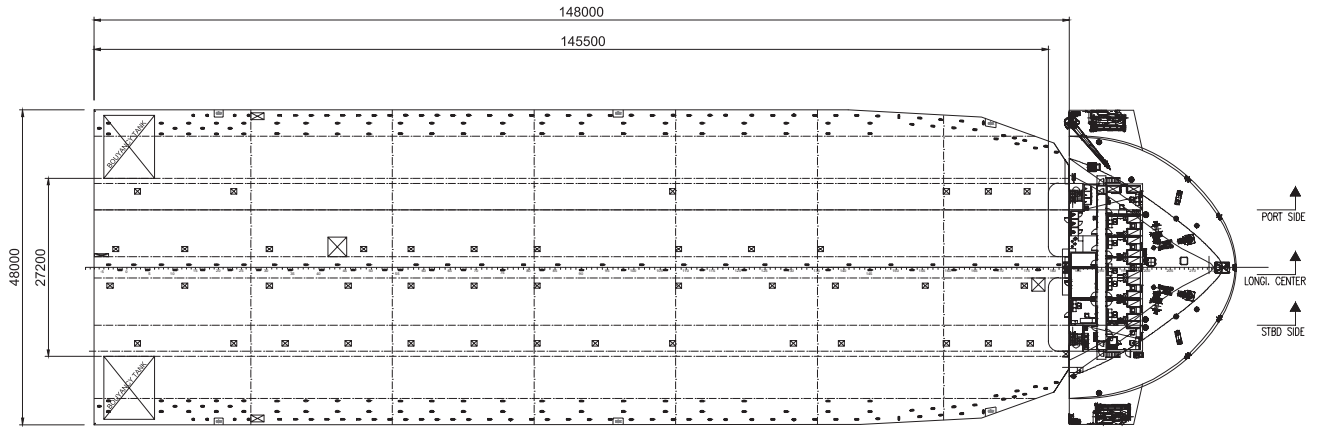
### Tonnage

Deadweight (SSW)	14,715 T
International (GRT/NRT)	17,824 T / 5,348 T
Suez GRT	19,896.9 T
Draft (SSW)	5.00 M

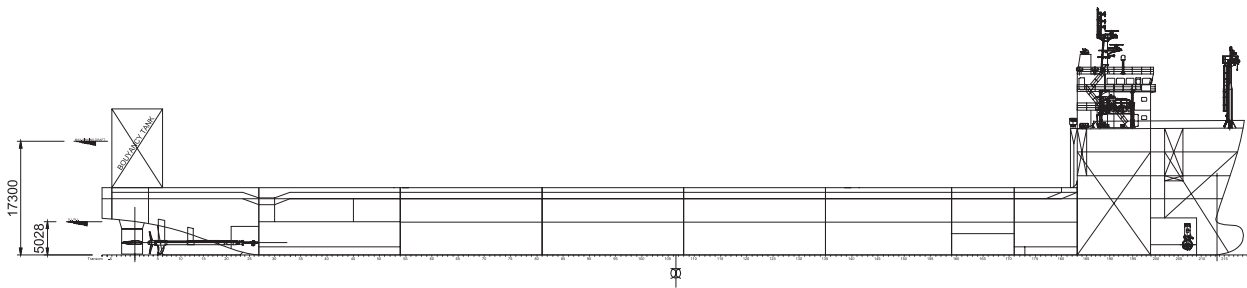
### Machinery / Service Speed

Main Propulsion Engine (Type, Power, Maker)	STX 8L32/40 - 3,600 KW x 750 RPM x 2 SETS
Propelling Power (Type, Power, Maker)	Two(2) sets of 4 Blade, 4900 PS x 750 RPM, STX MAN B&W
Service Speed	11.5 Knots

# MV. Sun Shine Vessel Structure

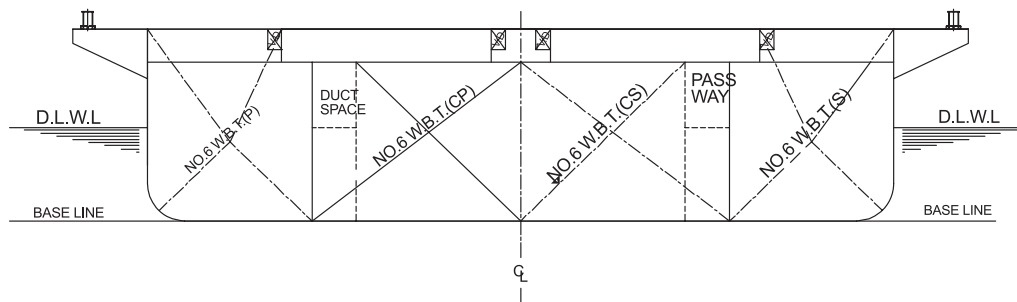


Upper Deck Plan



Elevation Plan

## FR.54 SECTION



Midship Section

# MV. Sun Rise

## Vessel Particulars



### General Information

Built	2012 / STX Dalian Shipbuilding Co., Ltd.
Type	Self-Propelled Semi-Submersible
Class	KR / DPS(1)
Flag	Marshall Islands

### Principal Dimensions

Length O. A.	168.50 M
Breadth (Moulded)	40.00 M (Breadth with Sponson : 44 M)
Deck Space	134.00 x 44.00 (M)
Depth to Main Deck	10.30 M
Draft Submerged	17.80 M

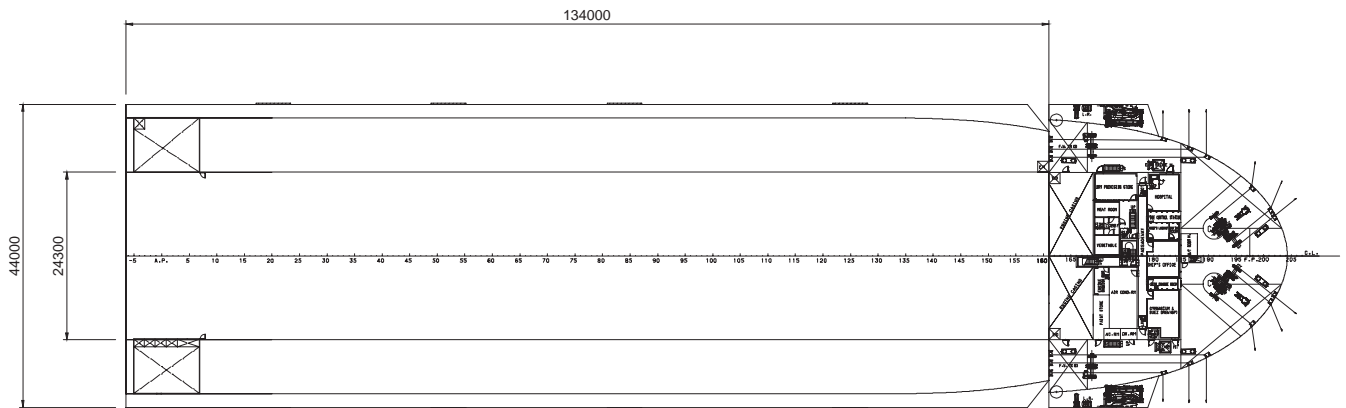
### Tonnage

Deadweight (SSW)	24,629 T
International (GRT/NRT)	22,499 T / 6,749 T
Suez (GRT/NRT)	24,377.24 T / 20,955.46 T
Draft (SSW)	7.08 M

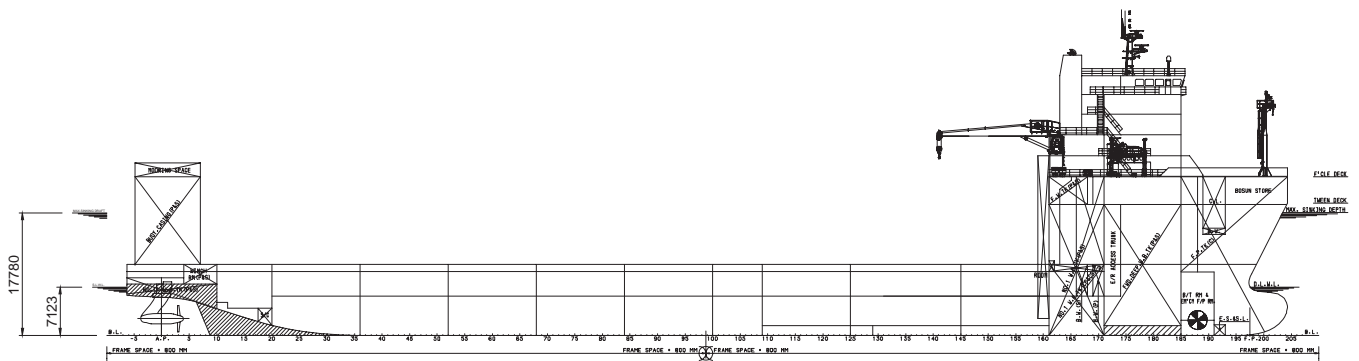
### Machinery / Service Speed

Main Propulsion Engine (Type, Power, Maker)	Three(3) sets of ELECTRIC PROPULSION 8L32/40, 4000KW, STX – MAN B & W
Propelling Power (Type, Power, Maker)	Two(2) sets of AZIPOD THRUSTER, 4500KW, ABB
Service Speed	13.0 Knots

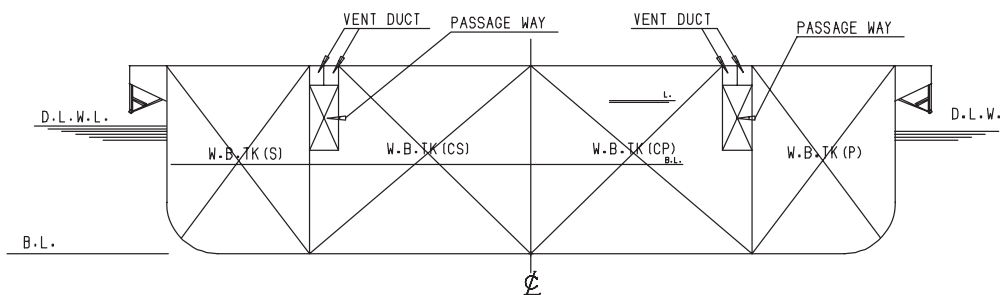
# MV. Sun Rise Vessel Structure



Upper Deck Plan



Elevation Plan



Midship Section